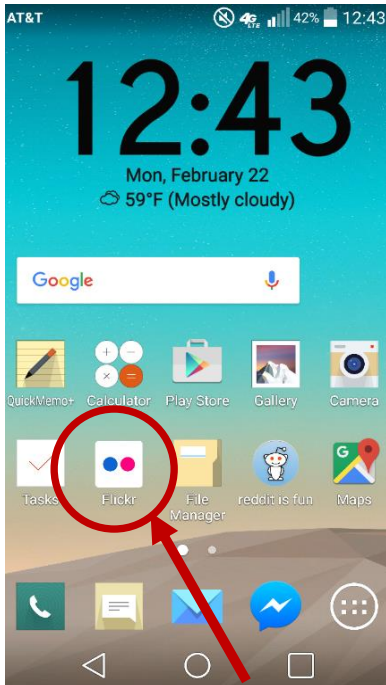
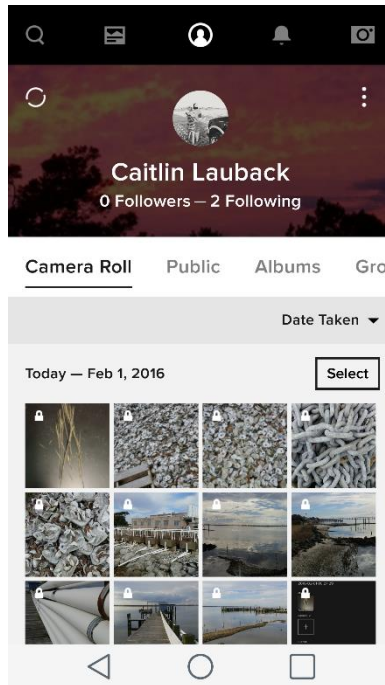


Adding photos to Flickr with an Android device

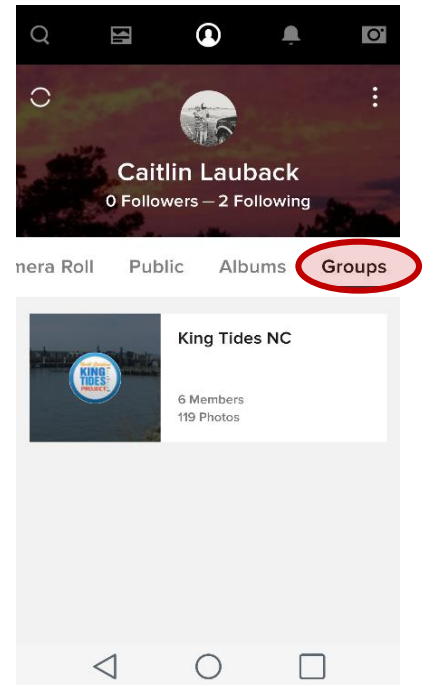
Downloading Flickr and Joining the King Tides NC Group:



1) Download the Flickr app and login.

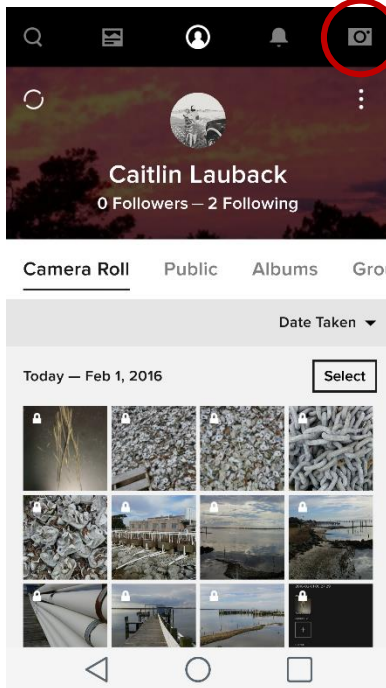


2) Your profile will show up similarly to how it looks on the website.

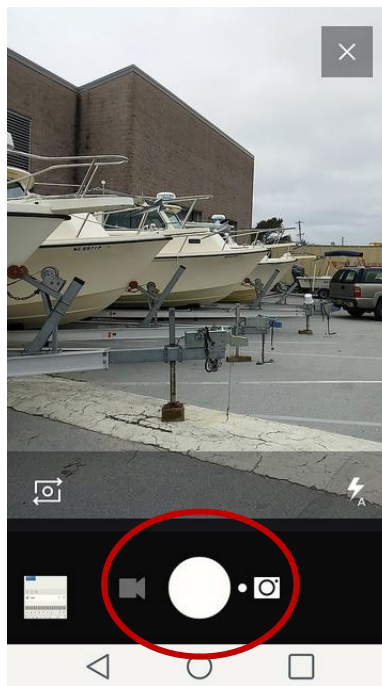


3) If you are not already a member of the **King Tides NC** group, you can join it.

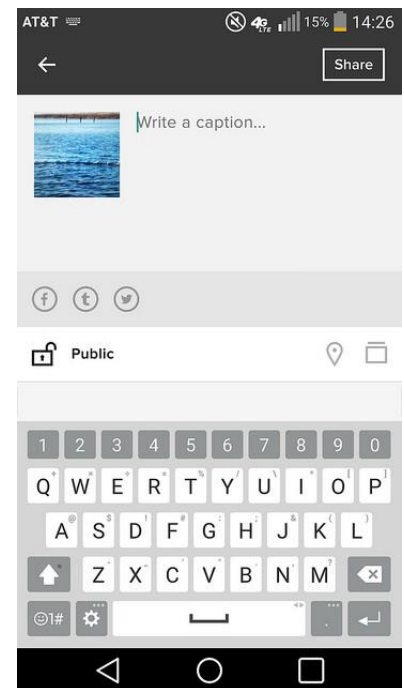
How to take a photo using the Flickr app:



1) Simply click on the camera icon to take a new photo.



2) Take photo with the center button, as you would using your phone's camera.

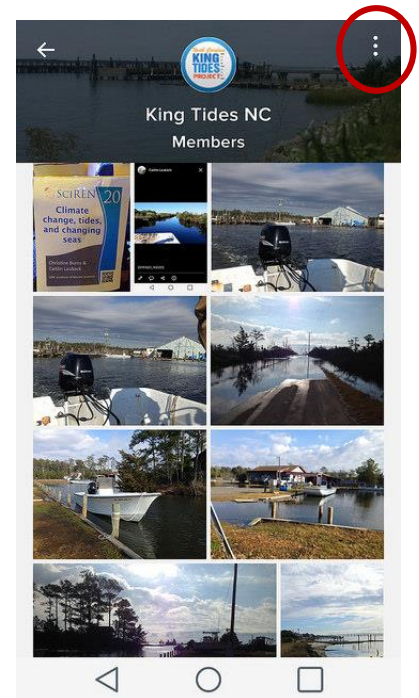
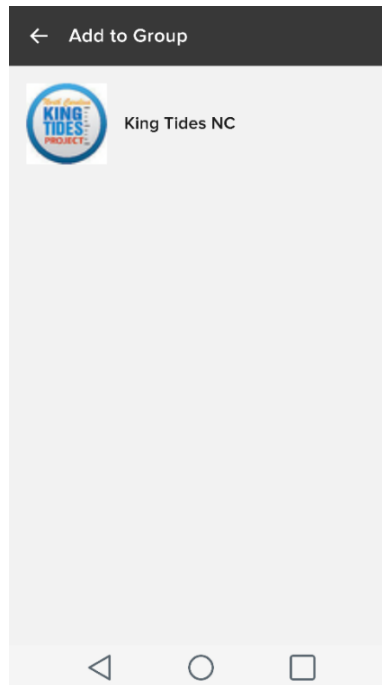
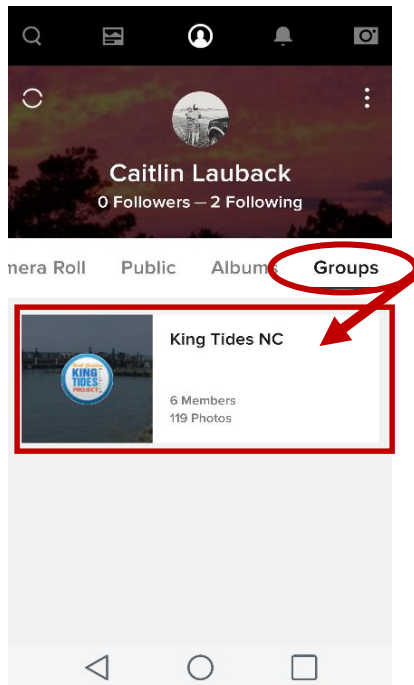


3) You will be prompted to give your photo a description.

How to upload a photo to the King Tides NC Group:

There are many ways to upload a photo to a group, however we will present just two ((A) Adding from a group and (B) adding from one of your albums)

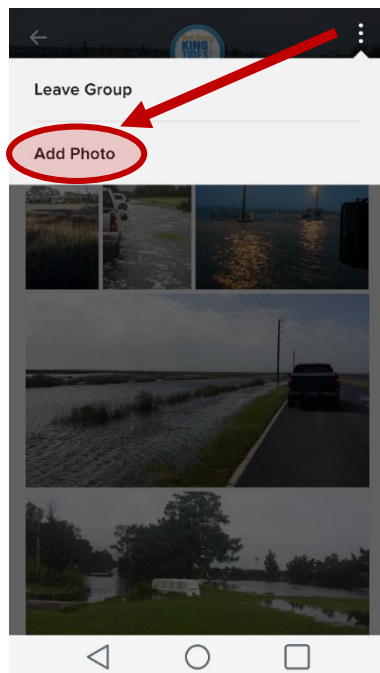
(A) Uploading a photo from the King Tides NC Group:



1) Select the groups menu from the main page.

2) Select King Tides NC from your groups.

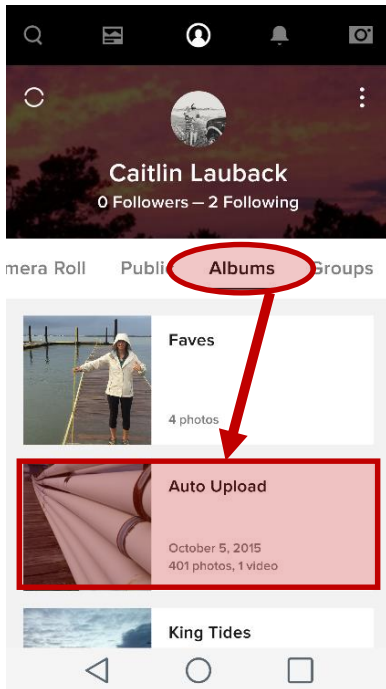
3) Click on the drop down menu.



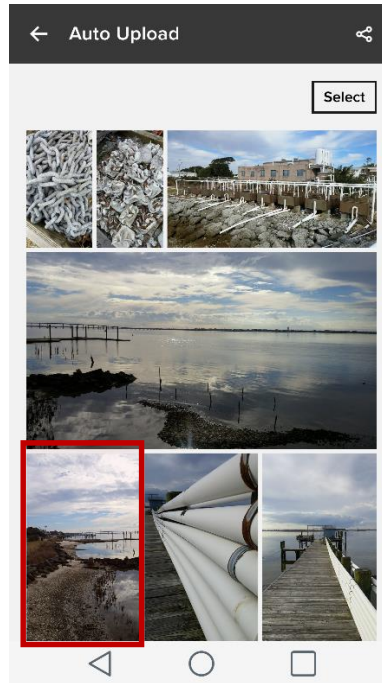
4) Click on "Add Photo".

5) Select which photos to upload to the group. Then, press "Add".

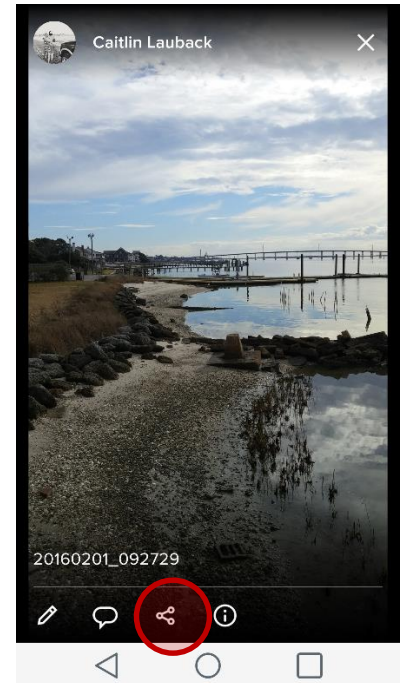
(B) Uploading a photo to the King Tides NC group from your Albums:



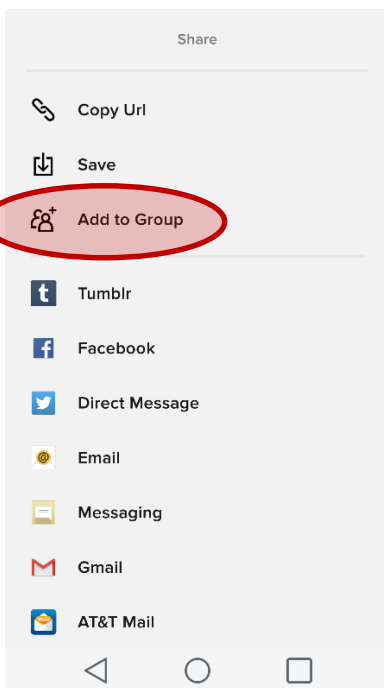
1) Under the "Albums" menu select whichever album contains the photos you want to upload.



2) Click on the photo(s) you wish you upload to the group.



3) Select the "Share" symbol at bottom of picture or selected pictures (not shown).



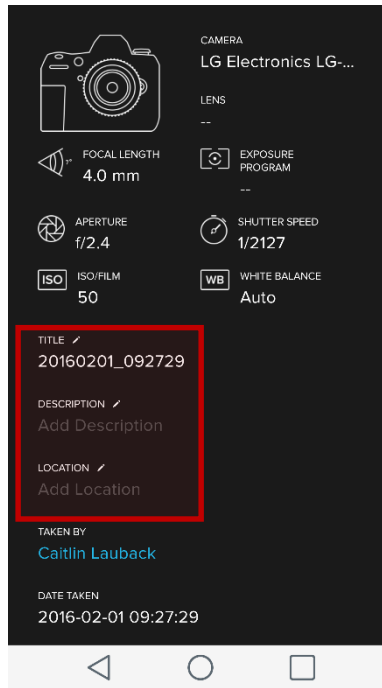
4) Select "Add to Group" from the dropdown menu.

Adding a location (geotagging) and description to your photo:

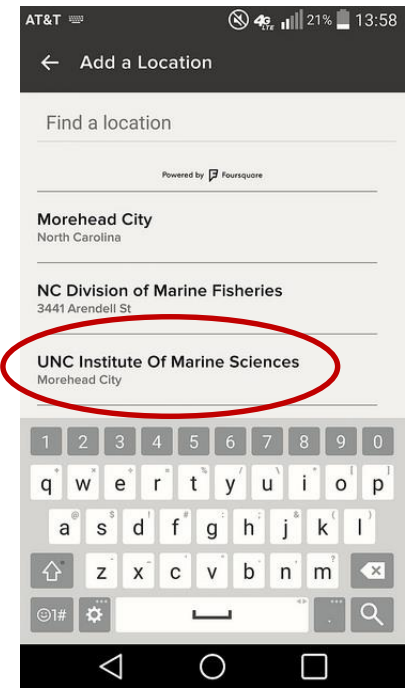
It is best for the project if we know where the photo was taken. If you did not geotag the photo when it was taken, it is easy to go to the photo after and add this information!



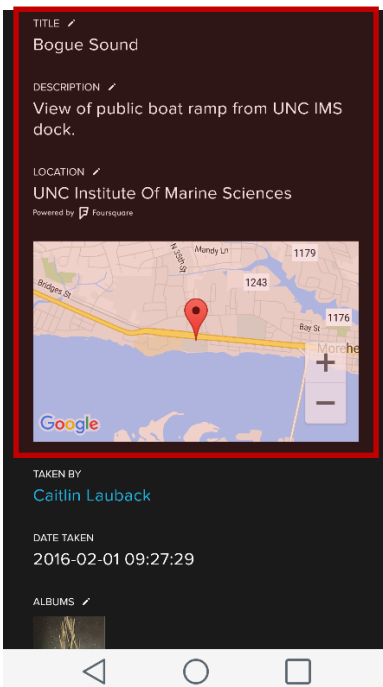
1) Select the photo you want to add information for, and click on the information button.



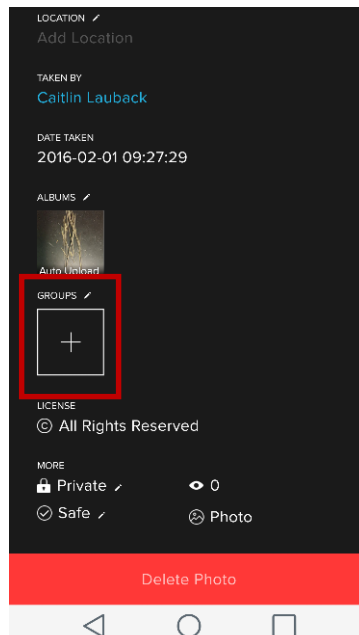
2) You will see the default information included about the photo (camera type, date, time etc). You can also add a description, title and location.



3) Type in a location, or select from list of options included in the map feature.



4) Here you can see the appearance after the added information.



5) At the bottom of the information screen, you have an additional way to add your photo to a group.